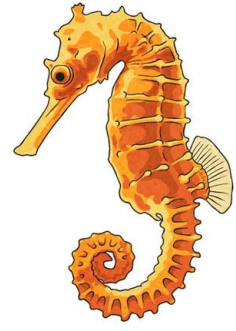


organism

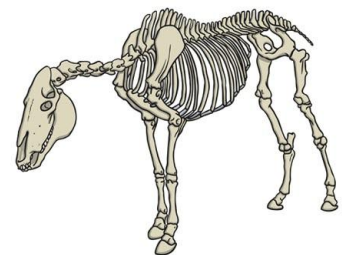


variation

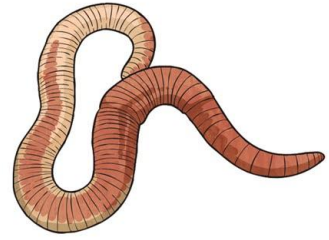


classification

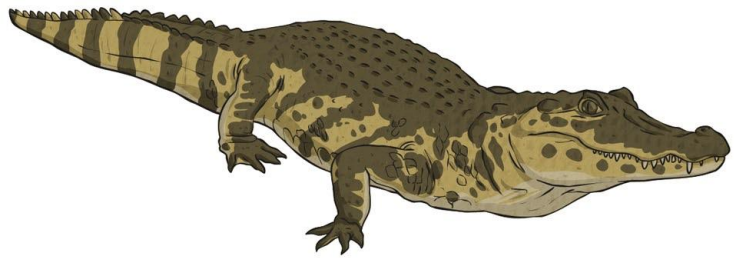
vertebrates



*invertebrates*



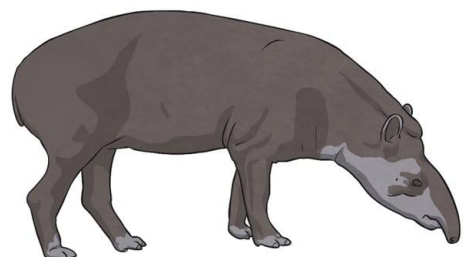
*reptile*



*bird*



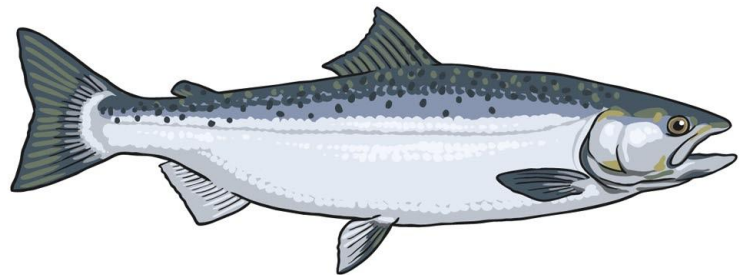
*mammal*



amphibian



fish



global

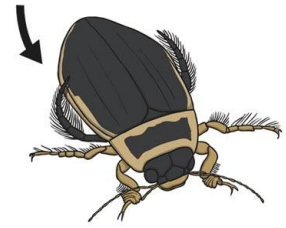


local

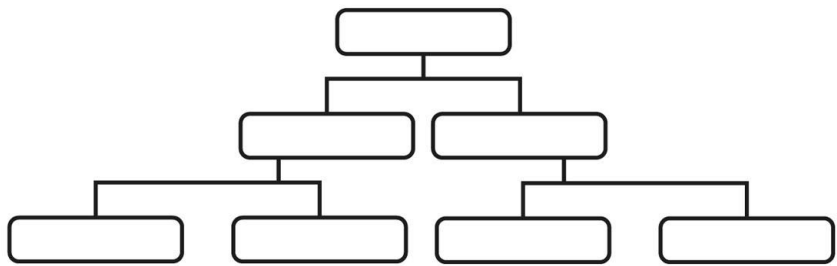


characteristic

6 legs



key



habitat



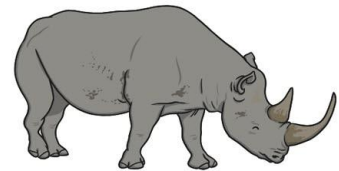
environment



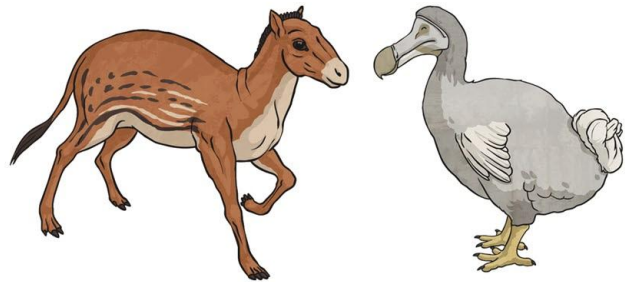
wildlife



endangered



extinct



conservation



Insert text

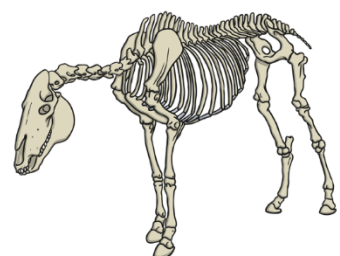


Insert text

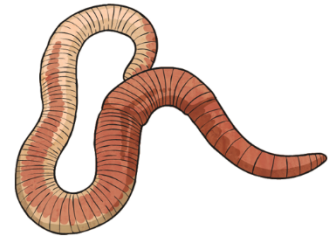


Insert text

Insert text



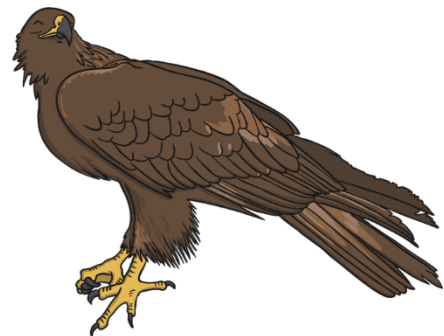
Insert text



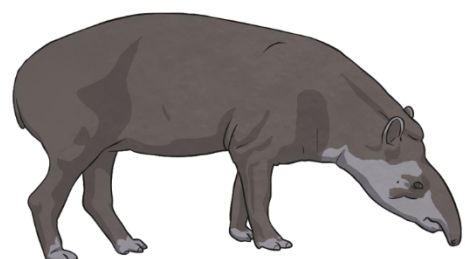
Insert text



Insert text



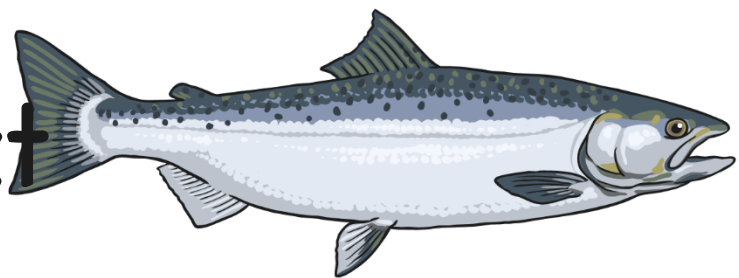
Insert text



Insert text



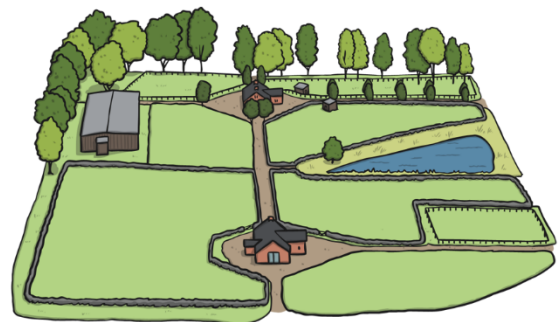
Insert text



Insert text



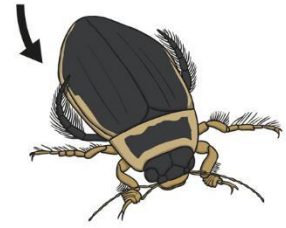
Insert text



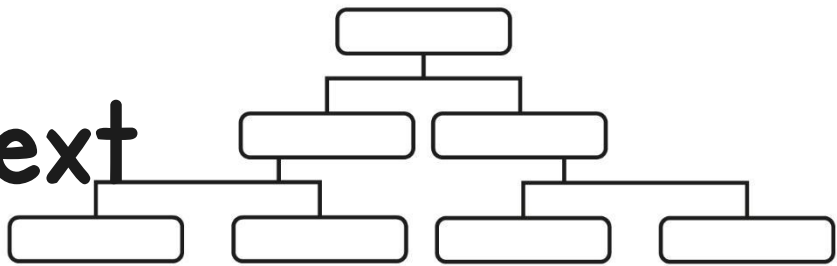


# Insert text

6 legs



# Insert text



# Insert text



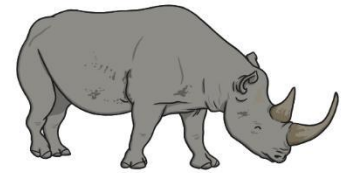
# Insert text



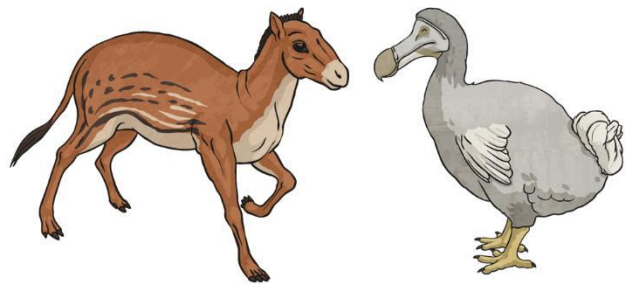
# Insert text



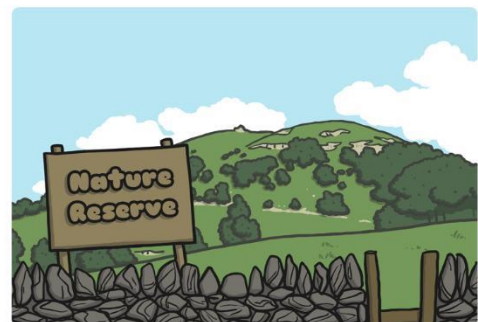
# Insert text



# Insert text



# Insert text



# organism

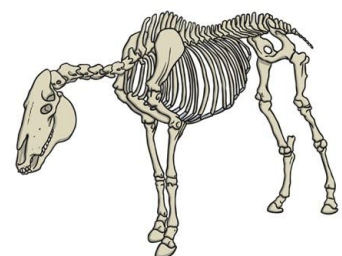


# variation

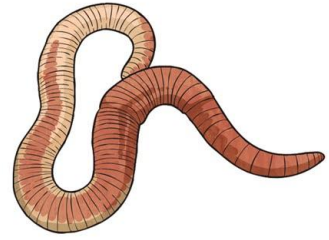


# classification

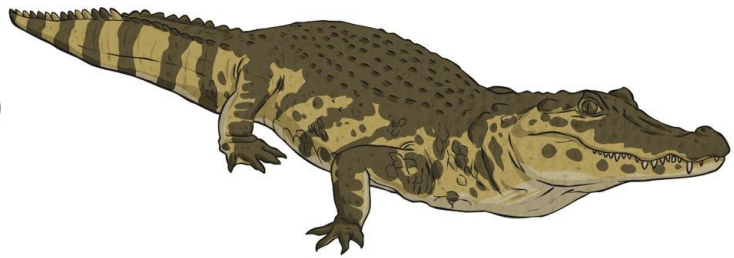
# vertebrates



**invertebrates**



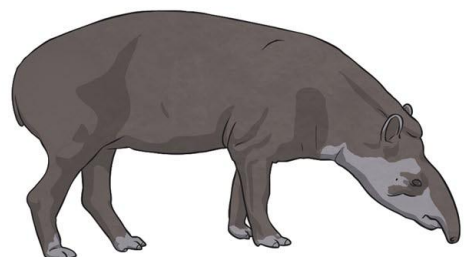
**reptile**



**bird**



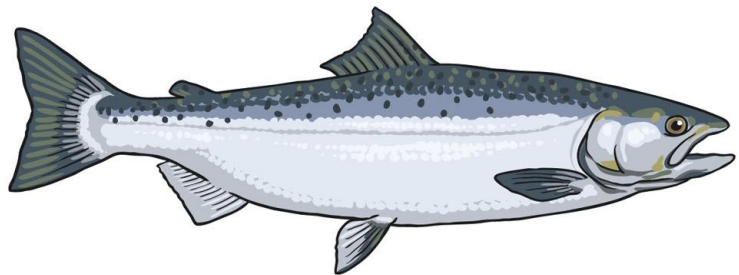
**mammal**



amphibian



fish



global

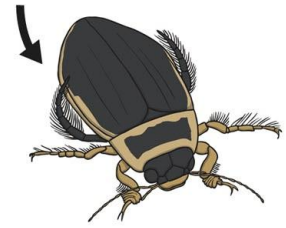


local

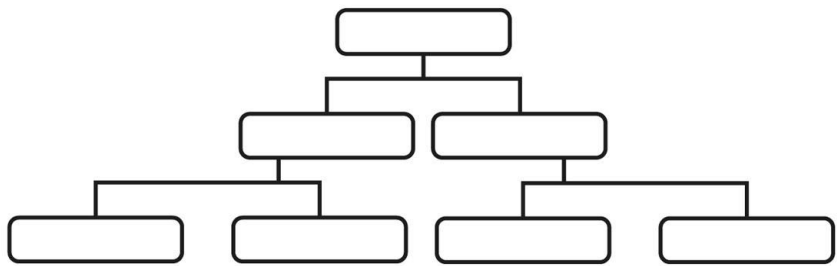


# characteristic

6 legs



# key



# habitat



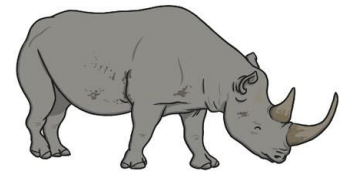
# environment



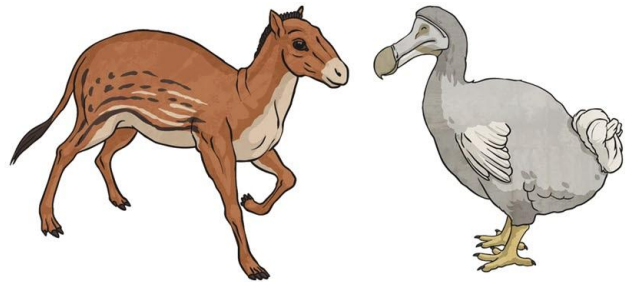
# wildlife



# endangered



# extinct



# conservation

